



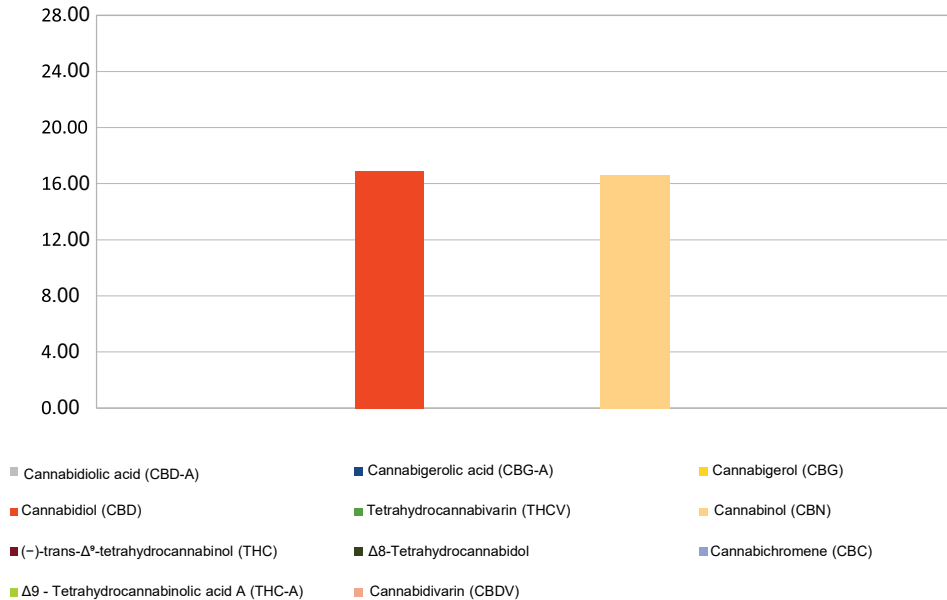
Cannabinoid Profile

Customer: **CBDGoldline**
 Customer Sample ID: CBG Gummy Bear 15mg
 Batch Number: ISOLC1 12.12
 Laboratory Number: 201904-1104
 Extraction Technician: DG

Extraction Date(s):	Analysis Date(s)
10/9/2023	10/9/2023


Cannabinoid (HPLC)		Results	
	LOD (mg/g)	Percent	mg/gummy
Cannabidivarin (CBDV)	<0.2		
Cannabidiolic acid (CBD-A)	<0.2		
Cannabigerolic acid (CBG-A)	<0.2		
Cannabigerol (CBG)		.165%	16.50
Cannabidiol (CBD)		.169%	16.90
Tetrahydrocannabivarin (THCV)	<0.2		
Cannabinol (CBN)	<0.2		
(-)-trans-Δ ⁸ -tetrahydrocannabinol (THC)	<0.2		
Δ ⁸ -Tetrahydrocannabidol	<0.2		
Cannabichromene (CBC)	<0.2		
Δ ⁹ -Tetrahydrocannabinolic acid A (THC-A)	<0.2		
Cannabinoids Total		Percent	mg/gummy
Max Active THC		0.00%	0.00
Max Active CBD		.169%	16.90
T. Active Cannabinoids		.334%	33.40
Total Cannabinoids		.334%	33.40
Ratios			
NA:1 CBD to THC		0.00 :1 THC to CBD	

Cannabinoid (mg/g)



Altitude Consulting, LLC utilizes NIST traceable Reference Standards and Certified Reference Material to calibrate analytical instruments along with proven analytical methods. The methods are applied in the most ethical manner following good laboratory practice guidelines. The results of this report are based solely on the sample submitted and cannot be reproduced. The sample was tested with the HPLC method using the Acquity UPLC I-Class PLUS and approved by chief analyst David Green.

This report expires 365 days after analysis date.

 David Green
OCT-9-2023